

## FARM TRANSFERRED BY RAIL

*The Manchester Guardian (1901-1959): Sep 30, 1932;*

## FARM TRANSFERRED BY RAIL

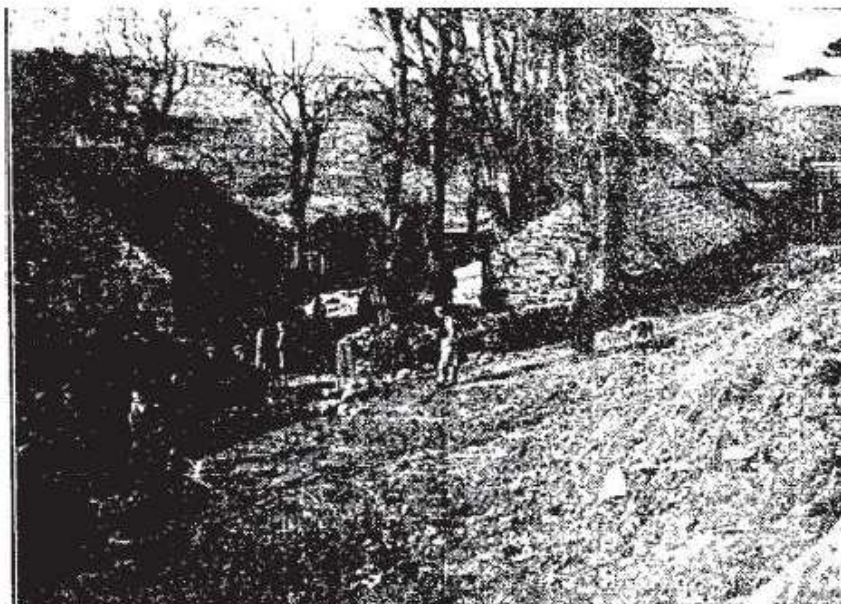
The whole of the stock of a large farm was transferred yesterday from Derbyshire to Warwickshire between morning and evening milking hours by the L.M.S. Railway Company. Mr. Albert Warren, the occupant of Fernilee Hall Farm, in the Goyt Valley, which has been purchased by the Stockport Corporation for waterworks purposes, took a farm at Alcester, near Stratford-on-Avon, and arranged to have the whole of his stock removed by a special train.

There were about sixty beasts, many of them milking cows, besides horses, poultry, other live stock, and all the implements, including carts, &c. The cows were milked before being taken to Whaley Bridge Station. The special train comprised five large cattle-trucks, a horse-box in which were three horses, crates of poultry, two large furniture-containers, and three wagons loaded with farm implements.

## IN THE GOYT VALLEY

*The Manchester Guardian (1901-1959): Feb 28, 1936;*

## IN THE GOYT VALLEY



People arriving yesterday for the sale of stock and materials at Upper Hall Farm, Fernilee near Whaley Bridge. The farm is to be demolished as a result of the new reservoir scheme in the Goyt Valley.

Classified Ad 193 -- No Title

*The Manchester Guardian (1901-1959): May 28, 1938:*

## Farms

**FERNILEE FARM**, near Whaley Bridge: 145 acres: vacant possession. Apply Water Engineer, Town Hall, Stockport.